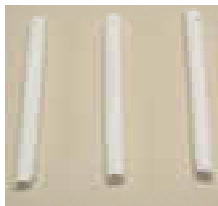


Evacuation Tips - HVE

(Starry Shine)

Vented/non-vented,
1000/case 430-7520 **\$22.95**



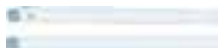
(Winner)

Vented/non-vented,
1000/case 430-7525 **\$22.95**

Combo-Tip (Crosstex)

Soft Tip Evacuator Vented on One end
(Same as Hygovac)

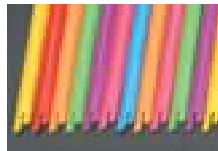
100/BAG 430-7530 **\$29.95**



Spectrum (Plasdent)

Bendable, 7 asstd colors

100/bag 430-7535 **\$6.95**



Pastel (Plasdent)

Bendable, 6 asstd colors

100/bag 430-7540 **\$6.95**



Hi-Vac Multi Colors (Plasdent)

100/bag 430-7545 **\$3.95**



Oratip III (Pascal)

Fits all high volume evacuation systems
50/Bag 430-7450 **\$1.95**



Maxvac Plus Combo Tip (Crosstex)

100/bag **\$3.99**

Blue 430-7551 Yellow 430-7554
Green 430-7552 Purple 430-7555
Pink 430-7553



Oral Evacuator (Plasdent)



8008 8015 8018 8888 8048 8048A 8028

Bendable-compare to Monoject
pkg of 100

8008 - Hi Vac 430-7561 **\$3.95**
8015 - OraJet 430-7562 **\$3.95**
8018 - OraVac 430-7563 **\$5.95**
8888 - DualVac 430-7564 **\$3.95**
8048 - TrkOVac 430-7565 **\$7.95**

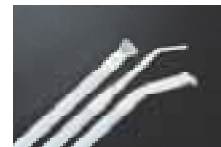
Autoclavable

8028 - Ultra Vent, 50/Bag 430-7566 **\$7.95**
8048A - TrkOVac, 25/Bag 430-7567 **\$7.95**

Tip Inserts (Plasdent)

pkg of 25 **\$7.95**

8015 - TP, tip inserts 430-7571
8015 - HS, surge inserts 430-7572
8015 - HJ, jet inserts 430-7573



TP HS HJ

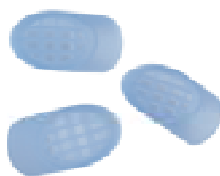
COMBO-TIPS® Bender (Crosstex)

430-7575 **\$8.99**



HVE Screen (Vista)

100/pkg 430-7580 **\$11.95**



(Banta)

100/case, 5 3/4" **\$2.99**
 White 436-1015
 Clear w/blue tips 436-1016



Evacuation Cups

Liners for A-DEC

6oz white 250/box 433-1000 **\$12.95**



Premium (Crosstex)

100/bag, 5 3/4" **\$3.95**
 Clear/Blue 436-0020
 Clear/White 436-0021
 White/White 436-0022



Dry Oral Cup (Plasdent)

Beige, autoclavable 433-1010 **\$4.99**



Advantage (Crosstex)

100/bag, 5 3/4" **\$2.95**
 Clear/Blue 436-0025
 Clear/White 436-0026
 White/White 436-0027



Saliva Ejectors

(Winner)

1000/case **\$19.95**

White/white 436-1002
 Clear w/blue tips 436-1003
 Green 436-1004
 Red 436-1005
 Teal 436-1006
 Raspberry 436-1007
 Yellow 436-1008



Flexform (Plasdent)

100/case, 5 3/4"
 White w/clear adapter 436-0030 **\$4.95**



Free Form (Crosstex)

Saliva ejector/tongue retractor, 100/bag
 White 436-0035 **\$5.99**



(Starry Shine)

1000/case, 5 3/4"
 White 436-1000 **\$19.95**
 Clear w/blue tips 436-1001 **\$19.95**

(Plasdent)

100/case, 5 3/4" **\$2.49**

White, white tip 436-1010
 Clear, white tip 436-1011
 white, blue tip 436-1012
 Clear, blue tips 436-1013



(Winner)

Disposable, pkg of 25 **\$5.99**
 White 1/8" 435-0001
 Green 1/4" 435-0002
 Blue 1/4" 435-0003



Surgical Tips



(StarryShine)

Disposable, pkg of 25 **\$5.99**

White 1/8" 435-0005

Green 1/4" 435-0006



Surgical Aspirator Tips (Pac-Dent) \$5.95

Disposable or Autoclavable, pkg of 25

Green, large 435-0010

White, small 435-0011



(Vista)

25/pkg **\$6.95**

Small, White 1/8" 865-1010

Medium, Green 1/4" 865-1011

Large, Blue 3/8" 865-1012



(Plasdent)

Oralsurge II 25/Bag \$6.95

1/4" orifice

Aquamarine 435-0021

White 435-0022

1/8" orifice 435-0023

White



Oralsurge III

3/8" orifice, 435-0024 **\$6.95**

vented tip, Seablue

Oralsurge-ST

1/16" orifice

Blue 435-0025 **\$8.95**

Oratip II (Pascal)

50/pkg 435-0026 **\$12.95**



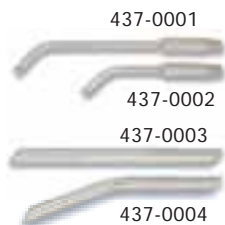
Surgical Tips - Metal

High Volume Aspirators (Vista)

Slotted Tip (Reduces Tissue-Grab) \$18.95

Fits HVE Cut-off Valve Equivalent to 46RSA

Fits HVE Cut-off Valve Equivalent to 46RSA



Surgical Tips - Metal

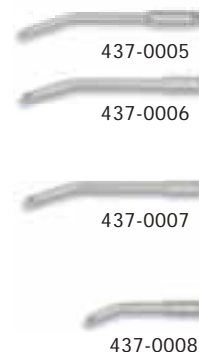
\$18.95

Fits HVE Cut-off Valve Equivalent to 46RSA

Fits HVE Cut-off Valve Equivalent to 46RSA

Fits HVE Cut-off Valve Equivalent to 46RSA

Fits HVE Cut-off Valve Equivalent to 46RSA



Suction Tube Adaptors (Pac-Dent)

11mm to 6.5mm 437-0010 **\$9.50**

11mm to 11mm 437-0011 **\$11.50**

11mm to 16mm 437-0012 **\$12.50**



Suction Tip Sleeves (Pac-Dent)

Fully Autoclavable. Blue color

6 tips/bag 437-0020 **\$9.95**



Evacuation System Cleaners

(California Dental)

2 lb powder 434-1000 **\$12.50**



Citrizyme (Pascal)

Dual enzymatic cleaner for ultrasonic and evacuation systems, ultra concentrated

300g Powder 434-1020 **\$29.50**

Unit Dose, 50/pkg 434-1025 \$29.50



Disposable Traps plastic

E-Max (First Choice)

Enzymatic super concentrated

1 Gallon 434-1030 **\$19.95**



Pro E-Vac (Certol)

Concentrated

1 Gallon w/pump 434-1040 **\$34.99**

1oz Unit dose (24/box)
434-1041 **\$16.95**



Sonic Tab E (JS Dental)

Next generation of evacuation system
cleaners, no foaming

25/pkg 434-1043 **\$22.95**



Vacusol Ultra (Biotrol)

Starter Kit

32 oz Bottle 434-1045 **\$39.95**

96 oz Bottle 434-1046 **\$89.95**



NeutraVac (Biotrol)

Starter Kit 434-1050 **\$69.50**

32 oz Bottle 434-1051 **\$39.95**

96 oz Bottle 434-1052 **\$79.95**



PureVac (Sultan Chemists)

2 Liter Bottle 434-0055 **\$49.50**

5 Liter Bottle 434-0056 **\$99.95**



Evacuation Screens (Palmero)

Disposable Traps & Strainers

pkg of 144 **\$29.95**

#1805 Blue, Dia, 2 1/8"
Fits: A-dec with
plastic canister 438-0001

#1806 Yellow, Dia, 2 1/4"
Fits: A-dec with
metal canister 438-0002

#1807 Green, Dia, 1 7/8"
Fits: Belmont, Biotech,
Pelton & Crane, Proma 438-0003



Screen-4-Vac (Plasdent)

144 Traps/box

Clear/White **\$19.95**

Colored **\$21.95**



8218 8178 8114 8158 8334

8218, Clear, 438-0100

B8218 - Blue 438-0101
Fits A-dec w/plastic canister, 2 1/8" Dia

8178, Clear 438-0102

G8178, Green 438-0103
fits Belmont, Biotec, Chayes, Den-Tal-Ez, Dentech,
Pelton & Crane, Proma, 1 7/8" Dia, Clear

8114, White 438-0104
Universal, fits most cuspidor bowls

8158, White 438-0105
fits A-dec Casade, Performer cuspidors bowls, 1 5/8" Dia

8334, Clear 438-0106
fits Pelton & Crane Spirit with white plastic canisters, 3 3/4" Dia





8814 8214 8078 8112 8100

Clear/White **\$19.95**

Color **\$21.95**

8814, Clear 438-0017
fits A-dec Casade & Performer, 1 1/4" Dia

8214 Clear 438-0018

Y8214 Yellow 438-0019
fits A-dec w/metal canister, 2 1/4" Dia

8078 White 438-0020
fits Siemens, Planmeca & many cuspidors with small openings
Small

8112, Clear 438-0021
fits DCI/Belmont Reality models, System 6000 models, 1 1/2" Dia

8100, 438-0022 **\$9.95**
Saliva Ejector traps, 72 pcs/bag, one size fits all

Disposable Canisters

holder



Each **\$5.95**

DC8-2400, fits Dentsply-MVS 0.75, 1.5, 4.0, before 1991
(4 1/2" W x 5 1/8" H) 438-0030

DC8-2300, fits Den-Tal-Ez dual after 1978, Dentsply after 1991,
Matrix 1000, 2000 & Dynamix models
(3 1/2" W x 4 3/8" H) 438-0031

DC8-2350, fits Apollo 2 hp, 3 hp single & tandem, Air Techniques
1997 & later dual models, Vacudent-Workhorse dual & newer
Vacstar (3 1/2" W x 4 3/8" H) 438-0032

DC8-2200, fits Air Techniques-Vacstar, Apollo 1 hp 1.5 single, Tandem,
1,2 hp Den-Tal-Ez single, Ohmeda-matrix, Turbine Industries,
Techwest-Whirl Vac, Vacudent-Workhorse single, plus & other units.
(2 3/4" W x 3 5/8" H) 438-0033

Mesh Filters (Pac-Dent)

Small 438-0050 **\$2.99**
fits DC8-2200

Large 438-0051 **\$3.99**
fits DC8-2300



Star Dental Supply Inc.
founded on the principles of
quality, value and service





**Celebrating Our
10th Year Anniversary
1998-2008**

We would like to
express our gratitude
to our vendors and
customers for supporting
us. Your satisfaction is
our guiding principle.